




**PIONEER SHEDS LLC**  
 CUSTOM BUILT SHEDS  
 8399 HIGHWAY 212 † ROBERTS, MT 59070  
 406-380-2315  
 FAX: 406-630-8781



**Creeksides/Quaker**



*Shown with shutter option*

- Includes:
- 4 x 6 Runners
  - 2 x 6 Floor joists
  - 5/8" Tongue & groove flooring
  - 16" OC framing
  - 16" Overhang
  - 2 - 24 x 27 Windows
  - Double door
  - 12' or wider need pilot

8 x 8	\$2,759	12 x 14	\$5,884
8 x 10	3,182	12 x 16	6,349
8 x 12	3,603	12 x 18	6,491
8 x 14	4,024	12 x 20	7,281
8 x 16	4,445	12 x 24	8,210
10 x 12	4,203	12 x 28	9,141
10 x 14	4,655	12 x 30	9,606
10 x 16	5,106	12 x 32	10,072
10 x 20	6,009	12 x 36	11,002

**Big Barn/Hi Side Barn**



*Shown with transom window option*

- Includes:
- 4 x 6 Runners
  - 2 x 6 Floor joists
  - 5/8" Tongue & groove flooring
  - 16" OC framing
  - Double door

8 x 10	\$3,062	12 x 30	\$8,762
8 x 12	3,467	12 x 32	9,257
8 x 14	3,872	12 x 36	10,248
8 x 16	4,280	14 x 16	6,560
10 x 10	3,467	14 x 20	7,762
10 x 12	3,963	14 x 24	8,963
10 x 14	4,458	14 x 28	10,164
10 x 16	4,909	14 x 32	11,365
10 x 20	5,942	14 x 36	12,566
12 x 14	4,804	14 x 40	13,768
12 x 16	5,298	16 x 28	11,020
12 x 18	5,793	16 x 32	12,581
12 x 20	6,288	16 x 36	14,157
12 x 24	7,278	16 x 40	15,734
12 x 28	8,268		

**Garden Shed/A Frame Shed**



- Includes:
- 4 x 6 Runners
  - 2 x 6 Floor joists
  - 5/8" Tongue & groove flooring
  - 16" OC framing
  - 12 Wide db 36" door
  - 10 Wide db. 30" door

8 x 10	\$2,926	12 x 16	\$4,954	14 x 24	\$8,324
8 x 12	3,302	12 x 18	5,404	14 x 28	9,375
8 x 14	3,708	12 x 20	5,855	14 x 32	10,427
8 x 16	4,053	12 x 24	6,756	14 x 36	11,478
10 x 10	3,377	12 x 28	7,657	14 x 40	12,529
10 x 12	3,767	12 x 30	8,107	16 x 28	10,029
10 x 14	4,158	12 x 32	8,558	16 x 32	11,454
10 x 16	4,548	12 x 36	9,458	16 x 36	12,896
10 x 20	5,329	14 x 16	6,222	16 x 40	14,323
12 x 14	4,503	14 x 20	7,273		

## Bunkhouse/Hi Side/Outfitter



*Outfitter Bunkhouse*

Includes:

- 4' Wraparound corner porch
- 4 Posts
- 9-Lite door
- 5 - 24 x 36 Windows
- 4 x 6 Runners
- 2 x 6 Floor joists
- 5/8" Tongue & groove flooring
- 16" OC framing

	A-Frame	Hi Side	Outfitter
10 x 16	\$6,375	\$6,696	
10 x 20	7,290	7,692	
12 x 14	6,262	6,584	
12 x 16	6,744	7,114	
12 x 18	7,226	7,627	
12 x 20	7,708	8,157	\$9,123
12 x 24	8,672	9,202	10,167
12 x 28	9,812	10,263	11,228
12 x 32	11,564	11,306	12,272
12 x 36	13,315	12,367	13,332
14 x 16	8,102	8,463	9,429
14 x 20	9,226	9,748	10,715
14 x 24	10,351	11,033	11,999
14 x 28	11,475	12,319	13,285
14 x 32	12,600	13,604	14,570
14 x 36	13,725	14,889	15,855
14 x 40	14,849	16,174	17,140
16 x 28	12,174	13,234	14,200
16 x 32	13,700	14,905	15,871
16 x 36	15,243	16,592	17,557
16 x 40	16,769	18,278	19,244



*Bunkhouse*

*(shown with optional 4' railing)*

Includes:

- 4' Porch
- 9-Lite door
- 3 - 24 x 36 Windows
- 4 x 6 Runners
- 2 x 6 Floor joists
- 5/8" Tongue & groove flooring
- 16" OC framing

## Double Car Garage



Includes:

- 4 x 6 Runners
- 2 x 6 Floor joists
- 3/4" Tongue & groove flooring
- 16" OC framing
- 12" OC floor joists
- 4 - 24 x Windows
- 1 Solid entry door
- 9 x 7 Rollup door
- Metal treadplate

20 x 20	\$14,102
20 x 24	15,512
20 x 28	17,627
24 x 24	16,922
24 x 28	19,742
24 x 30	20,729
24 x 32	21,575

24 x 36	\$23,974
24 x 40	25,384
28 x 28	22,512
28 x 32	24,847
28 x 36	27,182
28 x 40	29,518

## Garages



*A-Frame*

**Shown with steeper roof pitch & lap siding**

Includes:

- 4 x 6 Runners
- 2 x 6 Floor joists
- 3/4" Tongue & groove flooring
- 16" OC framing
- 12" OC floor joists
- 2 - Windows
- 1 Solid entry door
- 9 x 7 Rollup door
- Metal treadplate



*Hi Side*

A-Frame	
12 x 18	\$7,508
12 x 20	7,986
12 x 24	8,940
12 x 28	9,903
12 x 32	10,860
12 x 36	11,819
14 x 16	7,904
14 x 20	8,985
14 x 24	10,066
14 x 28	11,147
14 x 32	12,228
14 x 36	13,310
14 x 40	14,390
16 x 28	11,515
16 x 32	13,151
16 x 36	14,803
16 x 40	16,440

Hi Side	
12 x 18	\$7,807
12 x 20	8,317
12 x 24	9,337
12 x 28	10,354
12 x 32	11,374
12 x 36	12,393
14 x 16	8,407
14 x 20	9,609
14 x 24	10,810
14 x 28	12,011
14 x 32	13,212
14 x 36	14,413
14 x 40	15,615
16 x 28	12,491
16 x 32	14,278
16 x 36	16,065
16 x 40	17,851

## Animal Shelter



Painted (shown with optional tackroom)



	Painted
10 x 10	\$3,392
10 x 12	3,772
10 x 16	4,532
10 x 20	5,291
12 x 12	4,097
12 x 16	4,973
12 x 20	5,849

Includes:

- 6 x 6 base
- Smart siding
- 40 yr. metal roof
- Kickboard 4" high
- 12' or wider need pilot

### 8 x 16 Calf Shelter

Includes: • no paint

**\$1,952**

Includes: • NO DELIVERY

- Fob Roberts

**\$1,502**

## Green House



8 x 8 with 5 Windows	\$2,491
10 x 12 with 5 Windows	3,653
10 x 16 with 7 Windows - 4 Auto Vents	4,648
10 x 20 with 7 Windows - 4 Auto Vents	5,312
12 x 12 with 5 Windows	3,985
12 x 16 with 7 Windows - 4 Auto Vents	5,312
12 x 20 with 7 Windows - 4 Auto Vents	6,641
12 x 24 with 9 Windows - 6 Auto Vents	7,968
12 x 32 with 9 Windows - 6 Auto Vents	10,625

Extra Auto Vents \$111 Each

## Mini Barn



Includes:

- 4 x 6 Runners
- 2 x 6 Floor joists
- 5/8" Tongue & groove flooring
- 16" OC framing
- 10 Wide db. 30" door
- 12 Wide db. 36" door
- 8 Wide single 4' door and
- 2 x 4 Floor joists

8 x 8	\$2,340
8 x 10	2,702
8 x 12	3,077
8 x 14	3,452
8 x 16	3,813
10 x 10	3,287
10 x 12	3,473
10 x 14	4,023

10 x 16	\$4,413
10 x 20	5,181
12 x 14	4,443
12 x 16	4,864
12 x 18	5,284
12 x 20	5,705
12 x 24	6,545
12 x 28	7,371

## Econos



Includes:

- 4 x 4 Runners
- 2 x 4 Floor joists
- 5/8" Flooring
- 24" OC framing
- 10 Wide db. 30" door
- 8 Wide single 4' door

8 x 8	\$1,951
8 x 10	2,251
8 x 12	2,611
8 x 16	3,287
10 x 10	2,702
10 x 12	3,002

All 10 wide buildings  
have 2 runners.  
12 wide: 4 runners  
14 & 16 wide:  
5 runners

## Livery & Ole Wests



Livery Stable



Ole West

Includes:

- 4 x 6 Runners
- 2 x 6 Floor joists
- 5/8" Tongue & groove flooring
- 16" OC framing
- 2 - 24 x 27 Windows
- Db. 36" door
- 12' or wider need pilot

10 x 16	\$5,720
10 x 18	6,563
10 x 20	6,563
10 x 24	7,441
12 x 16	6,155
12 x 18	7,259
12 x 20	7,259
12 x 24	8,418

### Options

24 x 27 Single Pane Window	\$116.00
24 x 36 Single Pane Window	126.00
24 x 36 Double Pane Window	236.00
10 x 23 Transom	105.00
1 pr. Shutters	58.00
3' Wooden Door	126.00
4' Wooden Door	142.00
Double 30" or 36" Wooden Door	210.00
False Loft Door	105.00
Solid Entry Door	394.00
9-Lite Entry Door	431.00
6 x 7 Rollup Door	698.00
9 x 7 Rollup Door	761.00
4 x 9 Ramp	210.00
4 x 6 Ramp	179.00
3 x 4 Ramp	142.00
12" on center	\$.60/sq ft
7' Walls	\$5.78/lin ft
Lofts	\$2.90/sq ft
Shelving	\$5.78/lin ft
Loft Ladder	\$131.00
Gable Vents	\$26.00
Ridge Vent 3'	\$21.00
16" Cupola	\$210.00
20" Cupola	\$231.00
Weathervane	\$126.00
Porch Railing	\$26.00/lin ft
Color Match your House	\$184.00
Flower Boxes	\$79.00
Insulation--LP Smart Side R13	\$18.00/sq ft
2" Styrofoam Insulation Floor Only	\$2.90/sq ft

### Chicken Coops



5 x 6	\$2,121
6 x 8	2,417
8 x 10	3,128
8 x 12	3,473
8 x 16	4,169
10 x 12	3,971
10 x 16	4,855
10 x 20	5,662

### Dog Kennels

8 x 12 Deluxe Model Includes:



- Insulated
- dog door & walk door
- interior lined with glass board
- synthetic decking on floor

**\$5,982**

8 x 12 Dog Kennel

Includes:

- 2 - Windows
- dog door
- wood door
- non-insulated

**\$3,613**

10 x 16 Dog Kennel

Includes:

- 2 - Windows
- dog door

**\$4,919**

FREE DELIVERY within 35 miles  
\$7 per mile over 35 miles

\*\*\*SITE PREP AVAILABLE\*\*\*

Satin Barn  
White



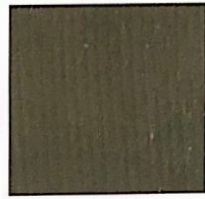
Satin Navajo  
White



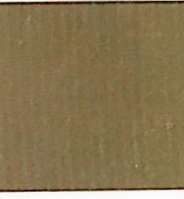
Gray Shadow



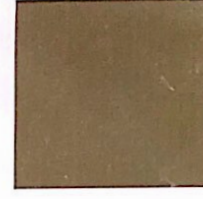
LL Gray



Satin Clay



Silver Maple



Satin Buckskin



LL Quaker Tan



Plantation  
Brown



Satin Dark  
Brown



Satin Jamestown  
Red



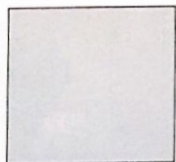
Satin Avocado



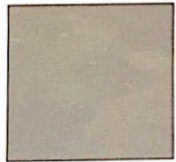
Satin Hunter  
Green

## STEEL ROOF COLORS

Red Star ★ Stock Colors | Blue Star ★ Available Colors



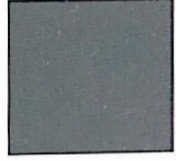
White ★



Light Stone ★



Beige ★



Light Gray ★



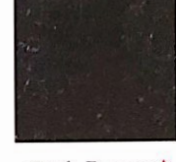
Dark Gray ★



Weathered  
Copper ★



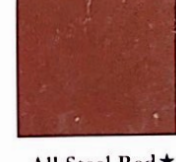
Medium  
Brown ★



Dark Brown ★



Copper Penny ★



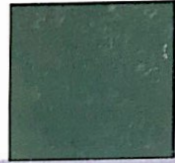
All Steel Red ★



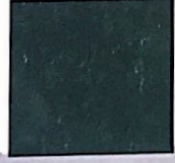
High Gloss  
Red ★



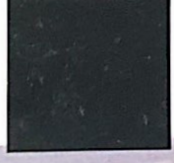
Bright Red ★



Medium Green ★



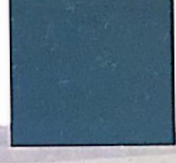
Dark Green ★



Forest Green ★



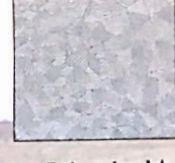
Burgundy ★



All Steel Blue ★



Dark Blue ★



Galvanized ★

## STAIN COLORS

Stain colors for T1-11 and Quarter Log are



Mushroom



Light Cedar



Rustic Cedar